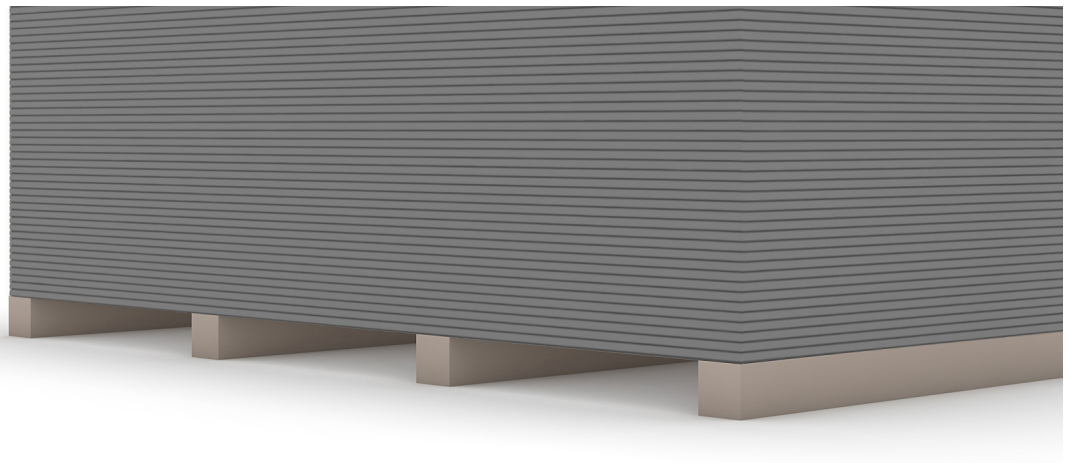


# MADA PROCEN CEMENT BOARD

## Technical Data Sheet

TDS-CB-R01-Rev2 Procem Cement Board - 2024



### Advantage



Light weight construction, easy & fast installation



Sound & thermal insulation



Improved strength & sag resistant



Fire protection



Easy finishing



Mold resistance

### Product Description

Mada Procem Cement Boards utilize a non-asbestos Fiber-Mesh reinforced cement substrate board, Portland and aluminite cement, light aggregate, and additives to create a non-combustible building material for interior and exterior applications with superior strength and durability.



# TECHNICAL DATA SHEET

## Field of Application

Mada Procem Cement Board is used in areas requiring high impact resistance (e.g. Corridors), wet area (e.g. washroom, kitchen, sauna) as well as an underlayment for tiles, floor & roof.

## Manufacturing Standards

- Mada Procem cement board are designed and produced to ASTM C1325 and EN12467 standards.
- Fire Rating (Mada System application) - Tested as per ASTM E119.
- Acoustic Rating (Mada System application) - Tested as per ASTM E90.



*Tested and Certified as part of complete Mada System to ASTM E119 for Fire Rated Systems*

## Product Characteristics

- Length: 1800mm. special 3000mm.
- Width: 1200m.
- Thickness: 12.5mm and 15mm.
- Edge: Round.
- Color: Grey.

## Technical Specification

Parameters	Procem Thickness	
	12.5mm	15mm
Weight (kg/m <sup>2</sup> ) +/- 0.2	15	17
Min Board Density (kg/m <sup>3</sup> )	1200	1133
Flame Spread Index	≤ 25	≤ 25
Smoke Development Index	≤ 450	≤ 450
Asbestos (% by weight)	Nil	Nil
Flexural Strength (MPa)(Dry)	> 5.17	> 5.17

For high-quality finishing results, MADA recommends MADA finishing products.

## Handling and Storage

- Mada Procem Cement Board should be stored on pallets, or on a pack of boards, and supported evenly on a firm, dry, level and structurally sound floor.
- Protect Mada Procem Cement Board from direct rain, sunlight or other extensive weather conditions with plastic sheeting or tarps.
- Mada Procem Cement Board should be stored in dry area inside the building which is ready to receive drywall installation and finishing.
- Use forklift for the horizontal transportation and designed hoists for vertical transportation of pallets.
- Loose Mada Procem cement boards must be handled by two people. Always lift boards in a vertical direction to avoid flexing and breakage.

## Material Packing Details

Thickness	12.5mm	15mm
Boards per pallet	30	30